



# Welcome to Krystal Connect

Explore personalized patient support services for people with dystrophic epidermolysis bullosa (DEB)



## **INDICATION AND USAGE**

VYJUVEK is a topical gel used to treat wounds in patients 6 months and older with dystrophic epidermolysis bullosa (DEB).

## **IMPORTANT SAFETY INFORMATION**

VYJUVEK gel must be applied by a healthcare provider.

After treatment, patients and caregivers should be careful not to touch treated wounds and dressings for 24 hours. If accidentally exposed to the VYJUVEK gel, clean the affected area.

**Please see Important Safety Information throughout and click here for full [Prescribing Information](#).**

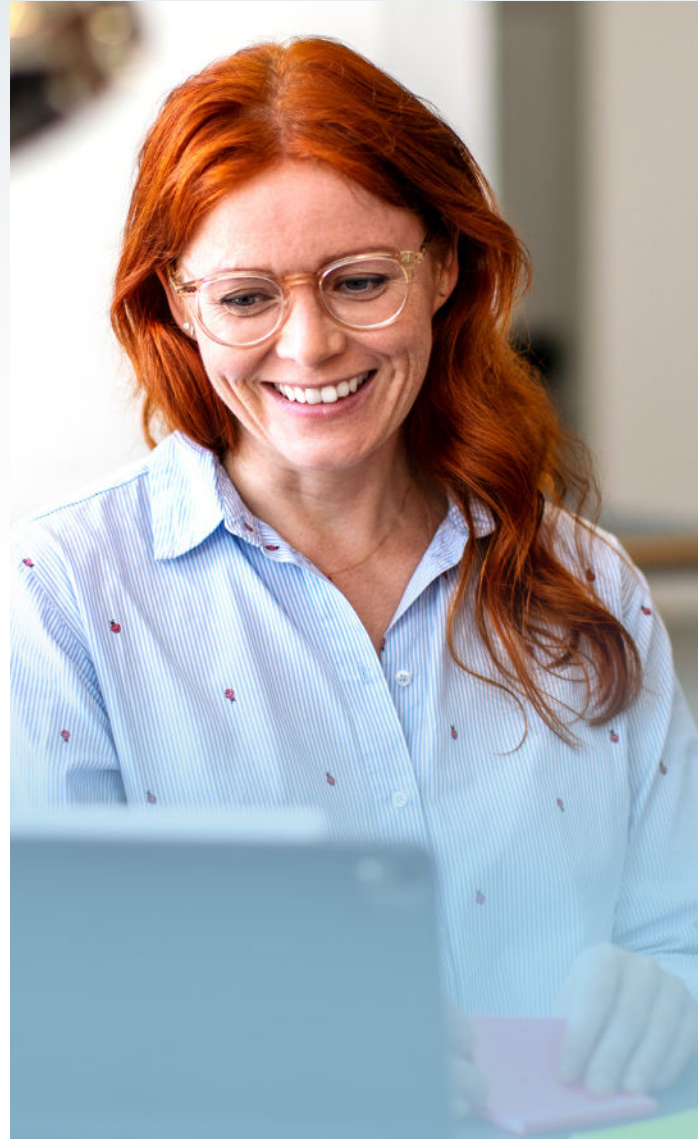
# Krystal Connect™ is a personalized patient support program to help you throughout your treatment journey

Whether you're considering treatment, ready to start, or looking for more information about dystrophic epidermolysis bullosa (DEB), Krystal Connect is here to help you

When you contact and enroll in Krystal Connect, you will be connected to a dedicated team. Your team is available to:

- Provide education about VYJUVEK™ (beremagene geperpavec-svdt) and DEB
- Help you understand your insurance coverage through benefits investigation
- Inform you about financial assistance programs for eligible patients
- Support treatment planning and administration
- Provide information to help you locate a treating doctor in your area

Krystal Connect provides comprehensive support tailored to your needs.



## IMPORTANT SAFETY INFORMATION (cont'd)

Wash hands and wear protective gloves when changing wound dressings. Disinfect bandages from the first dressing change with a virucidal agent, and dispose of the disinfected bandages in a separate sealed plastic bag in household waste. Dispose of the subsequent used dressings in a sealed plastic bag in household waste.

Please see Important Safety Information throughout and click [here for full Prescribing Information](#).



# Meet your dedicated team

While your doctor is your main resource,\* we're here to help answer your questions and assist you throughout the treatment journey.

Your dedicated team includes:



## Community Education Liaisons (CELs)

CELs have a background in nursing or genetic counseling. They can help answer questions about DEB and treatment with VYJUVEK™ (beremagene geperpavec-svdt)

- CELs can provide information on topics like family trees, genetic inheritance, and genetic testing
- CELs can share information about programs and events tailored to the DEB community
- CELs can also provide information to help you locate doctors in your area familiar with DEB



## Patient Access Liaisons (PALs)

If you and your doctor decide VYJUVEK is right for you, your PAL can help you navigate the ins and outs of insurance coverage, financial assistance options for eligible patients, and treatment coordination.

- PALs are experts in health insurance and understanding the healthcare system
- They can share information about what to expect and help coordinate weekly treatments with your treatment location

Their knowledge can help make the process of starting and staying on treatment easier to manage.

\*CELs and PALs do not direct patient care or provide medical advice.

### To contact Krystal Connect:



Call  
1-844-5-KRYSTAL or



Sign up at  
[VYJUVEK.com/  
connect](https://VYJUVEK.com/connect)

## IMPORTANT SAFETY INFORMATION (cont'd)

Patients should avoid touching or scratching wound sites or wound dressings.

Please see Important Safety Information throughout and click here for full [Prescribing Information](#).

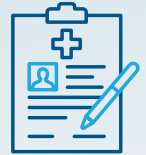


# Navigating treatment with Krystal Connect™

If you and your doctor decide that VYJUVEK™ (beremagene geperpavec-svdt) is an option for you, you'll follow the steps below:

## 1. Enrollment

After determining VYJUVEK is right for you, you and your doctor will complete the VYJUVEK Enrollment Form. This will serve as your prescription, and allows Krystal Connect to begin working with you.



## 2. Welcome call

Once Krystal Connect receives your enrollment form, your PAL will reach out to welcome you, to learn more about your needs, and to explain how they can help.



## 3. Helping evaluate your coverage options

Your PAL will help with benefits investigation to better understand your insurance coverage and next steps. If appropriate, your PAL may share information and resources about additional financial assistance options. These may include:

- For eligible commercially insured patients, our **\$0 Copay Program** can help reduce out-of-pocket costs to as low as \$0<sup>1</sup>
- For eligible patients without insurance coverage, or who may have insurance but don't have VYJUVEK coverage, our Patient Assistance Program (PAP) may be able to provide VYJUVEK at no cost<sup>2</sup>



## 4. Determining your treatment location and starting treatment

VYJUVEK can be administered by a healthcare professional at a healthcare professional setting (for example, a clinic) or home setting, depending on your doctor's instructions, your insurance plan coverage, and your preference.

Your Krystal Connect team will work with you and your doctor to confirm the location for VYJUVEK treatment, confirm your appointment, and help coordinate VYJUVEK delivery.



## 5. Ongoing support

VYJUVEK is administered weekly by a healthcare professional and should be applied weekly to wounds until they are closed. Your Krystal Connect team will check in with you from time to time. They can help answer new questions or, should your needs or situation change, help you avoid interruption to your treatment.



## IMPORTANT SAFETY INFORMATION (cont'd)

The most common adverse reactions (>5%) were itching, chills, redness, rash, cough, and runny nose. These are not all the possible side effects with VYJUVEK.

Please see Important Safety Information throughout and click [here for full Prescribing Information](#).



# We're committed to helping you at every step of the way

Start getting the support you need with Krystal Connect



Call  
1-844-5-KRYSTAL

or



Visit  
VYJUVEK.com

<sup>1</sup>Patient Eligibility & Terms and Conditions: The VYJUVEK Copay Program is available only to commercially insured patients with a valid prescription for VYJUVEK. Patients must be US citizens or residents for at least six months. Patients or their guardian must be 18 years of age or older to enroll in the program. **Patients are not eligible for copay assistance through the VYJUVEK Copay Program if they are cash-paying patients, or enrolled in any state or federally funded programs for which drug prescriptions or coverage could be paid in part or in full, including, but not limited to, Medicare Part B, Medicare Part D, Medicaid, Medigap, VA, DoD, or TRICARE (collectively, "Government Programs"), or where prohibited by law.** This offer is not health insurance. The VYJUVEK Copay Program applies only to out of pocket costs associated with VYJUVEK and not the cost of related medical services. In any calendar year commencing January 1, the maximum copay benefit amount paid by Krystal Biotech, Inc. will be \$15,000. Eligible patients may pay as little as \$0 per prescription, up to the annual maximum copay assistance amount of \$15,000. Additional terms and conditions apply. See [www.krystalconnect.com/pdf/us\\_terms.pdf](http://www.krystalconnect.com/pdf/us_terms.pdf) for full terms and conditions.

<sup>2</sup>The VYJUVEK Patient Assistance Program (PAP) is designed to provide VYJUVEK at no cost to eligible patients who meet certain financial need and insurance coverage eligibility criteria. Patients may be eligible to receive free drug if they demonstrate qualifying financial need, are uninsured or functionally uninsured, are US citizens or residents for at least six months, and have a valid prescription for VYJUVEK as supported by information provided in the program application. Eligibility does not guarantee approval for participation in the program. The PAP does not cover the cost of previously purchased product or medical services. See [www.krystalconnect.com/pdf/us\\_terms.pdf](http://www.krystalconnect.com/pdf/us_terms.pdf) for full terms and conditions.

## IMPORTANT SAFETY INFORMATION (cont'd)

**Call your healthcare provider for medical advice about side effects. You may report side effects to FDA at 1-800-FDA-1088 or to the Sponsor at 1-844-557-9782.**

Please see Important Safety Information throughout and click here for full [Prescribing Information](#).



Krystal Connect™, VYJUVEK™, and their associated logos are trademarks owned by Krystal Biotech, Inc. © Krystal Biotech, Inc. 2023 All Rights Reserved. VYJ-2200103 v1.0 May 2023